

Making sure your vehicle is free of biosecurity risk before importing to New Zealand.

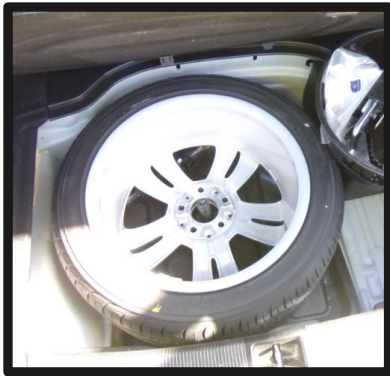
Before a new or used motor vehicle arrives in New Zealand, it must be thoroughly cleaned to ensure all biosecurity risk is removed.

While a valet service may make the vehicle look presentable, it doesn't ensure the vehicle will meet the 'clean' biosecurity requirement.

Below are examples of some frequently contaminated vehicle areas and tips to ensure the vehicle arrives in New Zealand 'clean'. If the vehicle doesn't meet the 'clean' requirement, any subsequent treatment or inspection costs are the responsibility of the importer, and vehicle may be subject to re-shipping back to the country of origin.

Vehicle Interior

Interior areas of a vehicle include the boot, between and under car seats, ceiling areas, floor surfaces, side panels, all compartments, the spare tyre and its storage area.



Look for egg masses and insects on both sides of the spare tyre, check the surrounding area. The tyre tray should be cleaned and vacuumed.



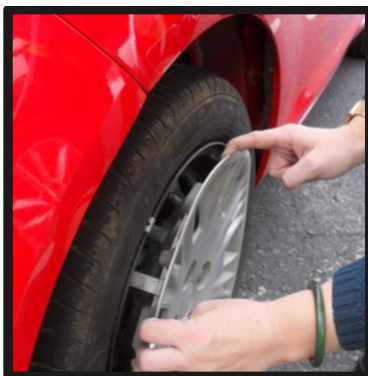
Vacuum under and between car seats. Plant material, seeds and wood chips must be removed.



Check the boot for insects, plant material, seeds, soil and spiders. Vacuum the boot interior.

Vehicle Exterior

Exterior surfaces include bumpers, grates, hubcaps, mud guards, trays, tyres and wheels.



Remove hubcap to check underneath for egg masses, insects, plant material, spiders and soil.



A light road film on the wheel is ok, but more than that is not considered clean, especially if plant material, seeds or soil clumps are found.



Look for egg masses, insects and spider webbing in and around the bumper and grates.



Look for plant material in exterior compartments and trays. Remove any pooled water from the vehicle.



Thoroughly check mudguards, tyres and wheel arches for soil and seeds. Water blasting may be best to remove soil in these areas.



If mud guards are covered in felt, thorough scrubbing or water blasting is often required, especially around the wheel arch.

Motor

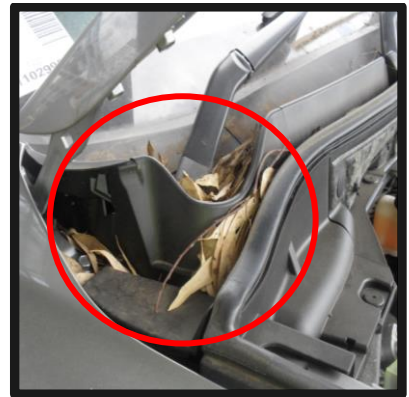
Motor area includes in and around motor, crevices and bonnet area.



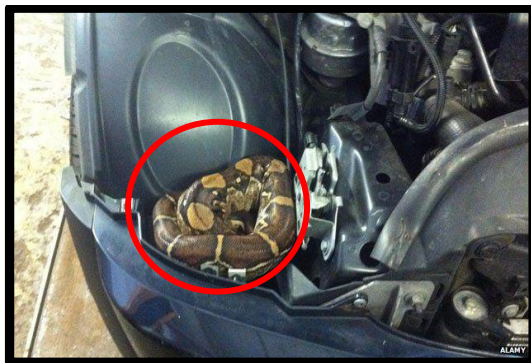
Look for insects, plant material and spiders in and around bonnet grilles.



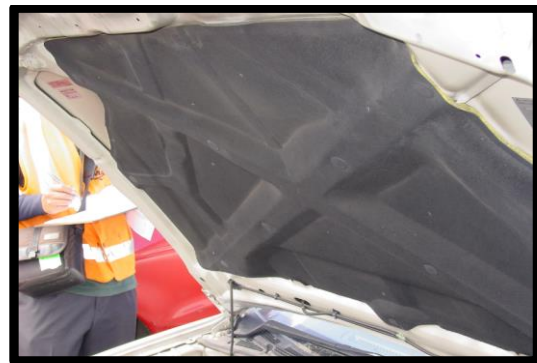
Wipe down surfaces that may contain plant material, seeds, and soil and remove it all.



Look for insects, plant material and spiders in corners/crevices.



Look out for reptiles and snakes. They are attracted to warmth and confined spaces such as motors.



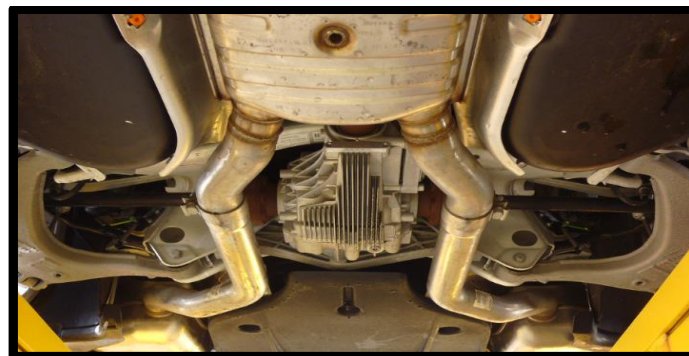
If the underside of the bonnet is covered in felt, a thorough scrubbing/water blasting may be needed to remove plant material and seeds.



Use a bright light to illuminate all motor crevices. Ensure insects, plant material and spiders are removed from the motor.

Vehicle Underside

Look for animals, snakes, spiders, insects, soil, seeds and plant material.



Use a bright torch to inspect what you can of the vehicle underside. A high pressured water hose can help clean what you may not be able to see.

Best ways to remove contamination:

- Insect infestation – If you can see many insects in or on the vehicle, fumigation or heat treatment should be carried out.
- Insects/snails – remove.
- Plant material – remove. If found in the interior, use a vacuum cleaner. If that vacuum is going to be imported along with the vehicle as personal effects, remember to remove the vacuum bag beforehand.
- Seeds - hand pick seeds off with sticky tape or equivalent. Loose seeds can be vacuumed from interior.
- Soil – pressure hose on exterior.

Inspection Checklist:

Below is a check list to follow to ensure all areas of the car have been cleaned prior to importation.

Steps	Area to inspect and clean	Complete ✓
1	Clean the grille and front of vehicle	
2	Clean across and under the bonnet and air vents	
3	Clean front wheel, mud guards and wheel arch	
4	Clean mirrors and window ledges	
5	Clean across and around the roof	
6	Clean back wheel, mud guards and wheel arch	
7	Clean back bumper area	
8	Repeat the entire process on the other side of the vehicle	
9	Open bonnet and thoroughly clean motor area. Remember to use a torch to make sure all motor crevices have been cleaned.	

10	Clean all interior areas of vehicle, including all compartments, under carpet if loose, under mats, between and under the seats	
11	Clean the underside of vehicle	

Please note: If personal effects are accompanying a vehicle, you need to declare and package them separately as MPI quarantine officers must be able to verify the cleanliness of the vehicle on arrival. Any associated unloading or additional inspection costs will be the responsibility of the importer.

